



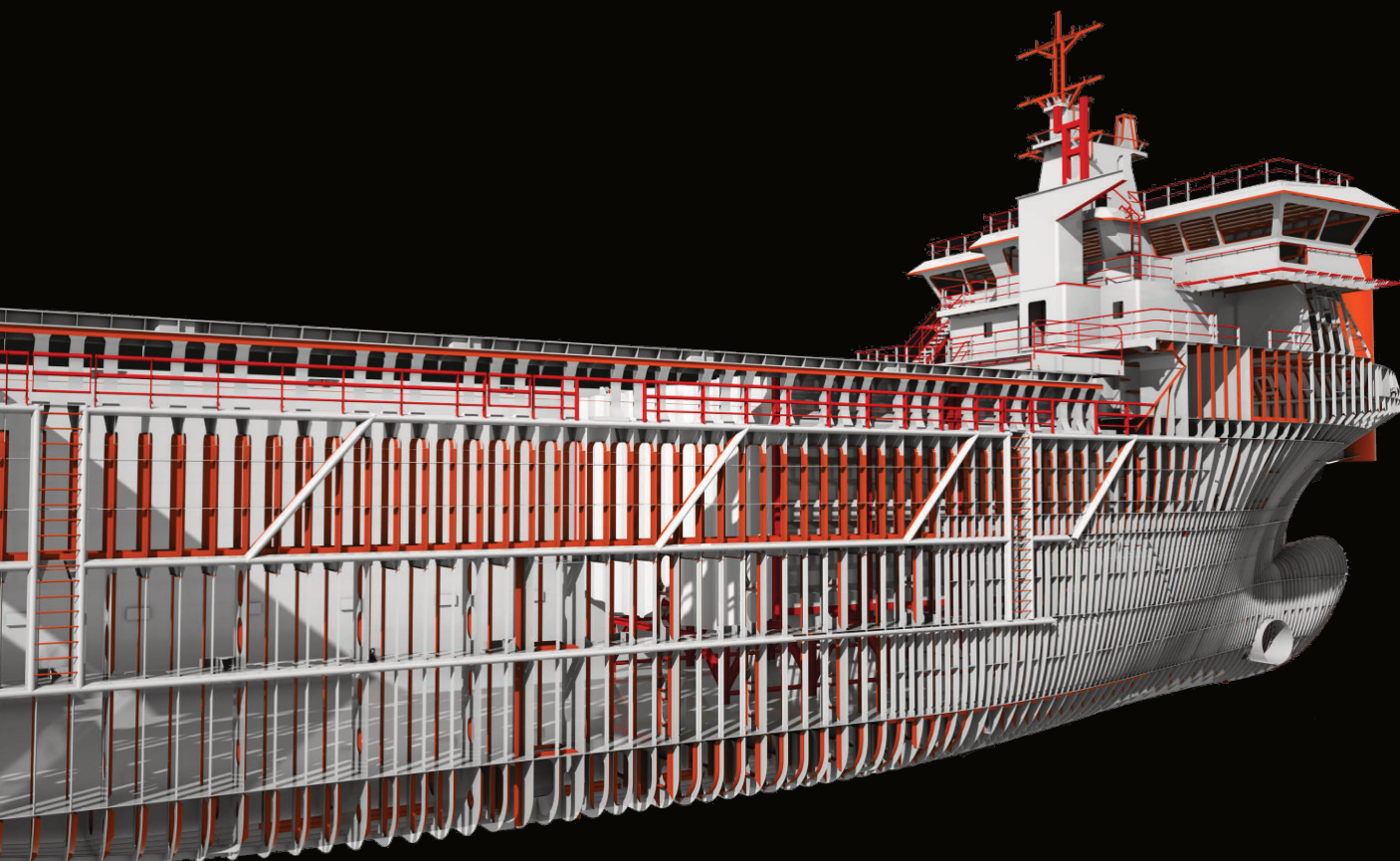
## Rubin/Arctic Fjell B69 EWOS Fish farms feedship

The "RUBIN" is a very flexible and cost efficient feedship. One of its unique features is an innovative modular solution that will provide for more flexibility. The silo modules can easily be removed, which makes possible to transport cargo other than bulk and oversized feed bags.

### **Seatech scope of work:**

Delivery of detailed engineering plans for the hull and superstructure, foundations forequipment, outfitting and Piping systems using Nupas Cadmatic software as follows: Workshop Drawings, Unit Measurements Card, Parts and Nesting profile lists, Profile Sketches, Unit Levelling, Nesting Cards and Essi Codes, Shell development with templates. Creating layout for the engine room and accommodation. Creation of a 3D Model library in Cadmatic, systems integration in a 3D model, Isometric drawings for piping systems composed from axo view and spool drawings, coordination and integration of drawings, penetration drawings, detail drawings, materials list , COG for systems and for equipment.





## Rubin/Arctic Fjell

B69 EWOS

Fish farms feedship

### Principal characteristics

Length over all:	69.70 m
Moulded breadth:	15.00 m
Depth to upper deck:	9.82 m
Gross Tonnage:	2 768 t
Deadweight:	3 000 tm
Class:	DnV +1A1 General Cargo Carrier, E0, Ice C

Owners/Operators:

**Sjøtransport Rotsund  
& Artic Shipping AS**

Builder: **Crist**

Designer: **Multi Maritime AS**

